

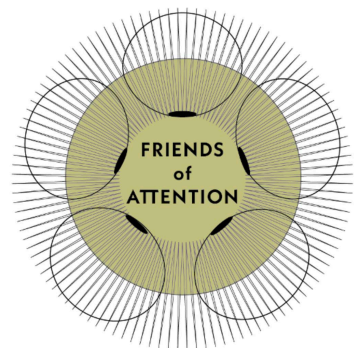
# Pareidolia Exercise

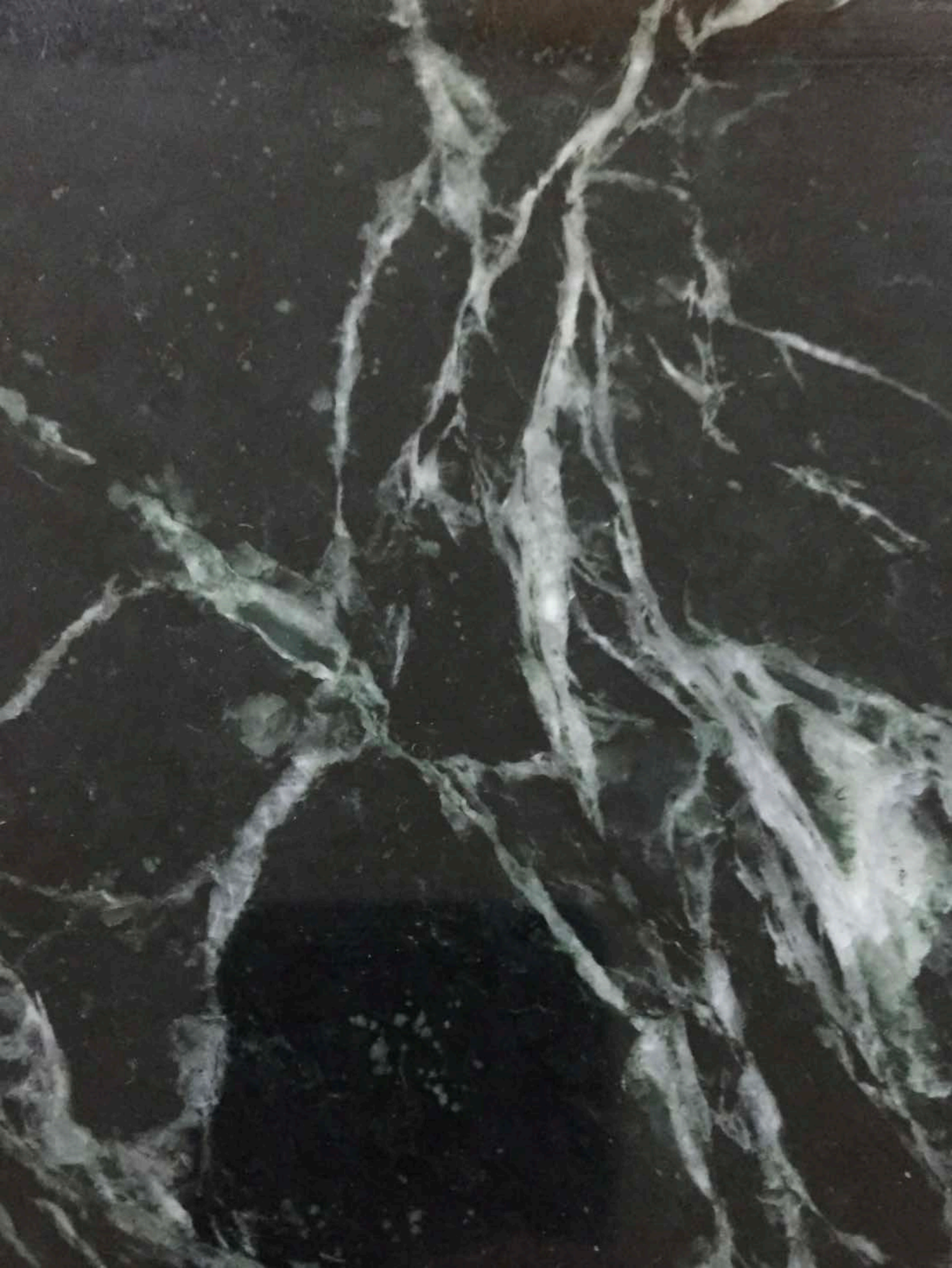
## Friends of Attention

### GATHERING No. 7

29 May 2020

In the course of a discussion of Kant's efforts (in the Third Critique) to understand spontaneous sculptural forms (in caves and other rock formations), and in connection with readings from Bachelard and Leibniz's *Protogea*, we undertook an exercise to explore the "walls of our quarantine caves" -- looking for faces.





























Apple: Studies suggest that certain estimates, such as those of herd immunity, are low. Reported cases reflect what daily health care policy reveals. The study from Boston, China, evaluated immunity only among people returning to work, not in the general population. Source: New York Times, Public Health England, City of Boston, Public Health Agency of Sweden

# In Battling Outbreak, Herd Immunity Remains Distant Objective

fraction of the threshold known as herd immunity, at which the virus can no longer spread widely. The precise herd immunity threshold for the novel coronavirus is not yet clear, but experts said they believe it is higher than 60 percent.

## Even Infection Rate of Ravaged New York Is Far Below Mark

immunity in their populations. But even in these places, recent studies indicate that no more than 7 to 17 percent of people have been infected so far. In New York, which has had the most outbreaks, as of early May, a survey of people in stores and companies released by the state. Similar surveys in China, the first to be released, not only showed that immunity was far below the mark but also that the infection rate was low.

have been infected as of early May, a survey of people in stores and companies released by the state. Similar surveys in China, the first to be released, not only showed that immunity was far below the mark but also that the infection rate was low.

For many, the outbreak of coronavirus has been a financial crisis. This summer, the \$1,200 check for those who needed for those who needed with little income. The second round of the program that helped millions of businesses keep workers on payroll will wind down if Congress does not extend it. Eviction moratoriums that are keeping their homes are expiring in cities. And the \$600 unemployment benefit allowed tens of thousands of workers to stay in July. The stimulus package is still in the works.

NADIA POPOVICH / THE NEW YORK TIMES









































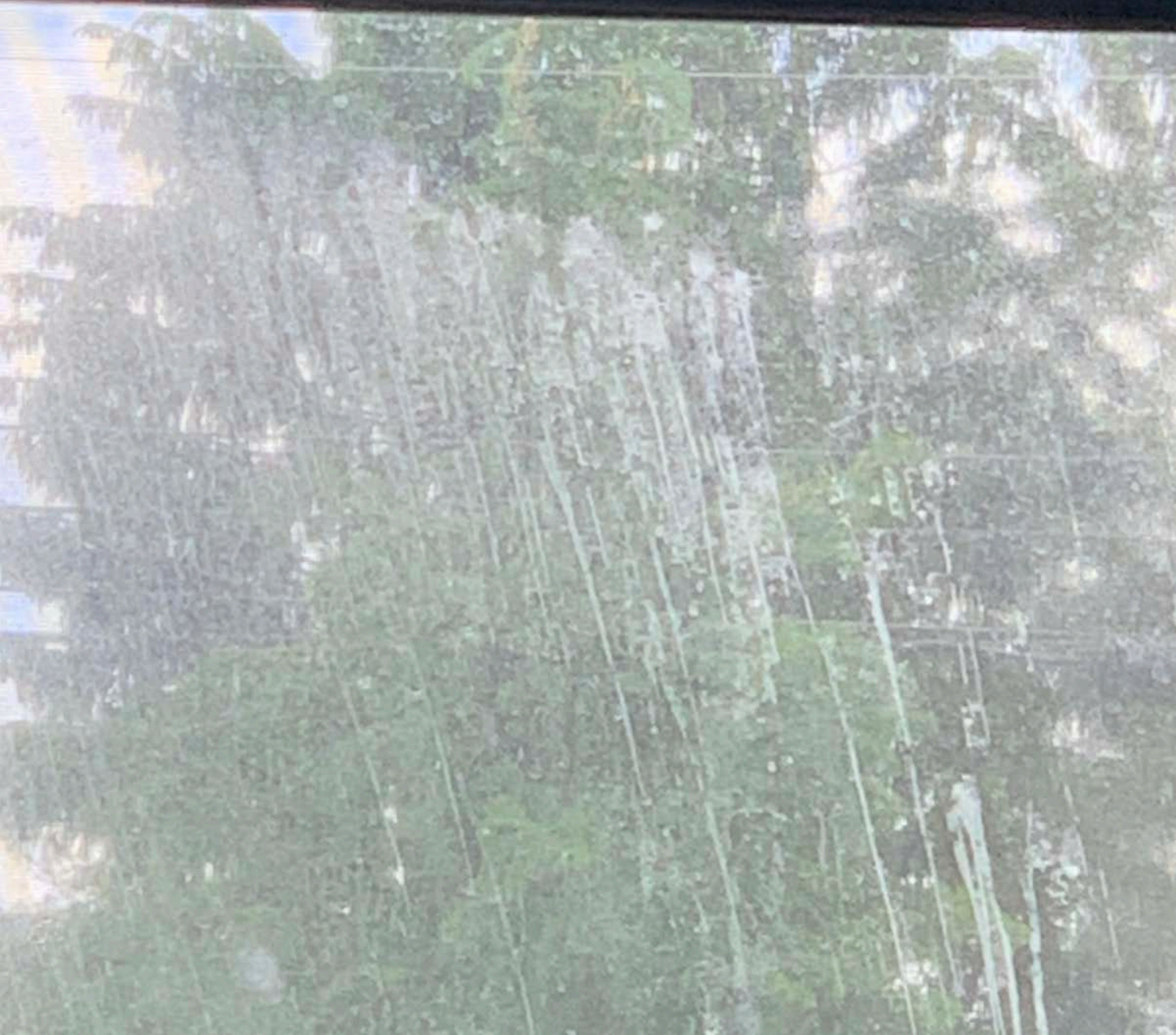










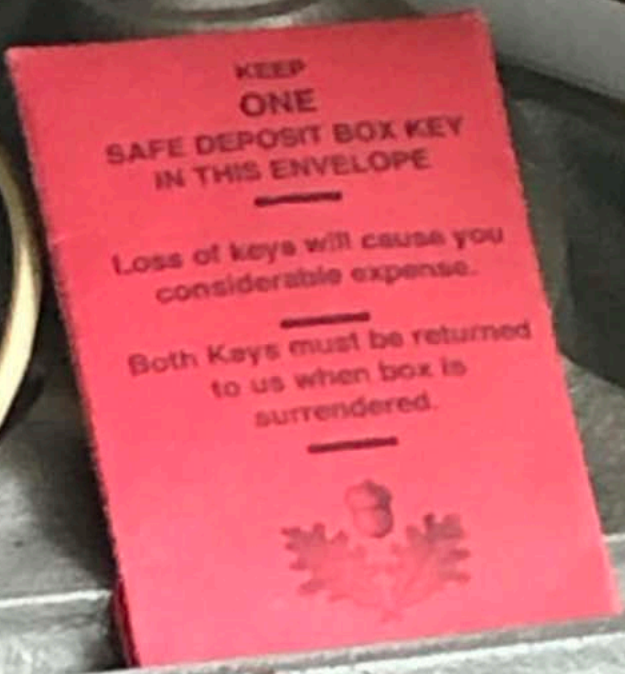












KEEP  
ONE  
SAFE DEPOSIT BOX KEY  
IN THIS ENVELOPE

---

Loss of keys will cause you  
considerable expense.

---

Both Keys must be returned  
to us when box is  
surrendered.

---





















































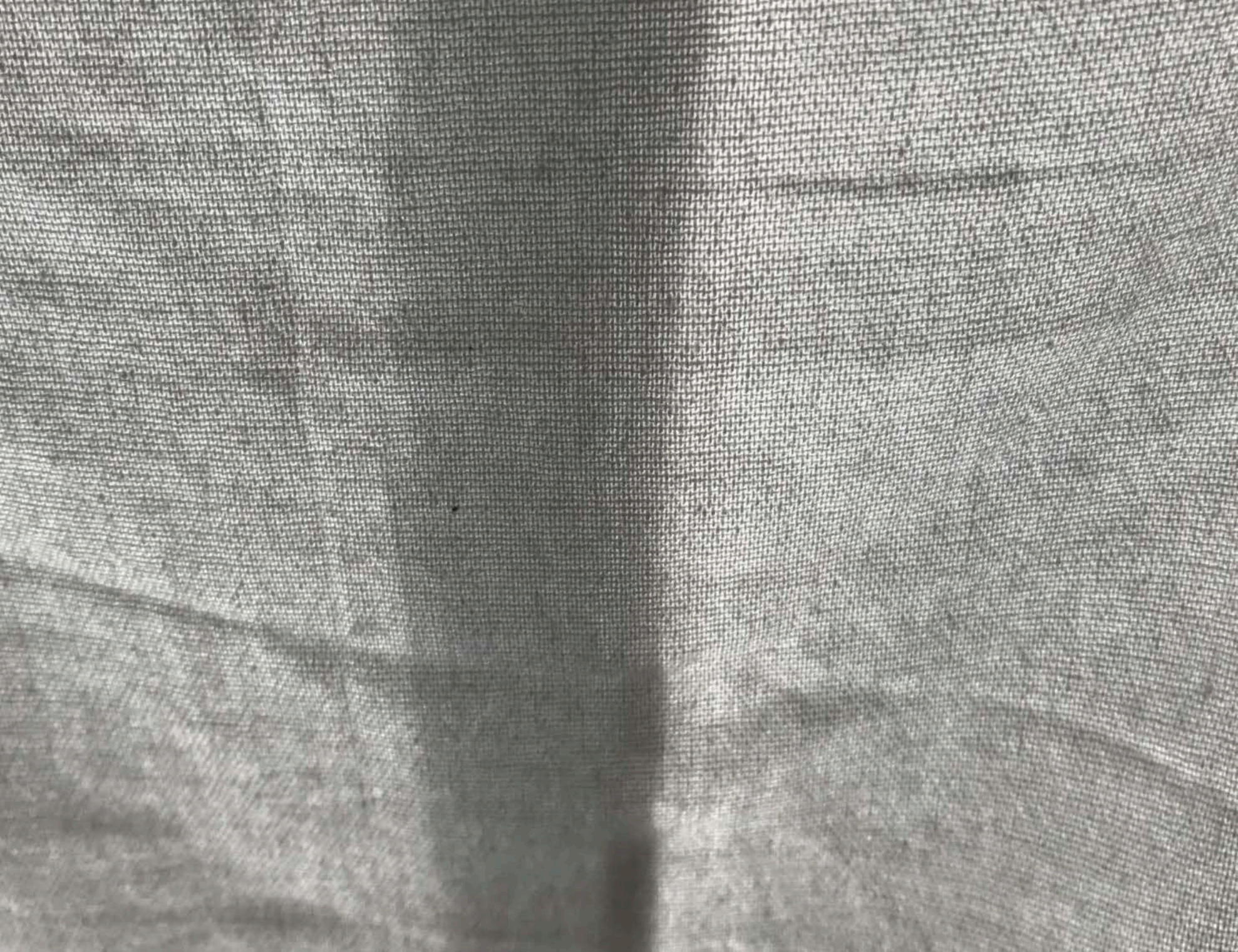




























































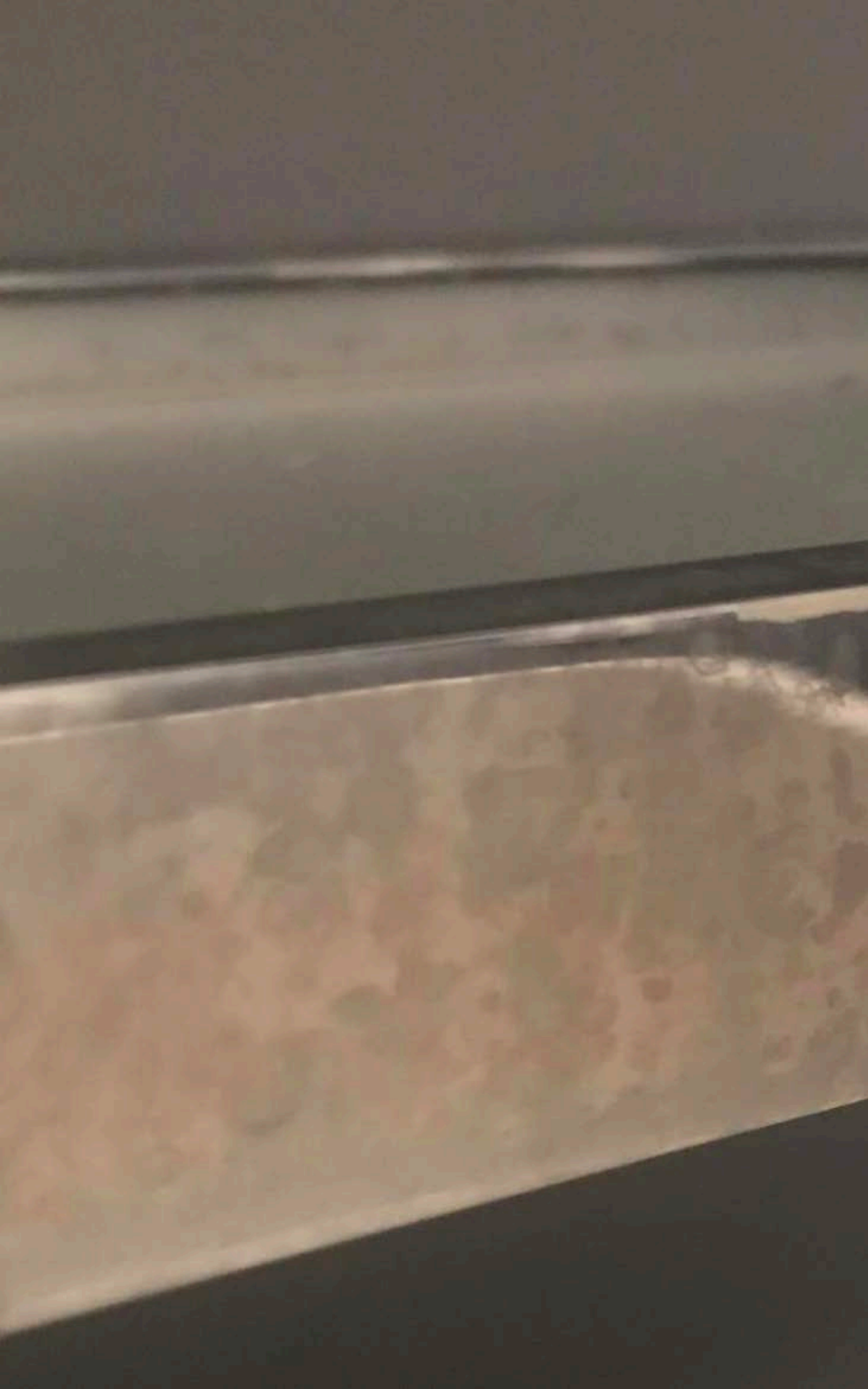
























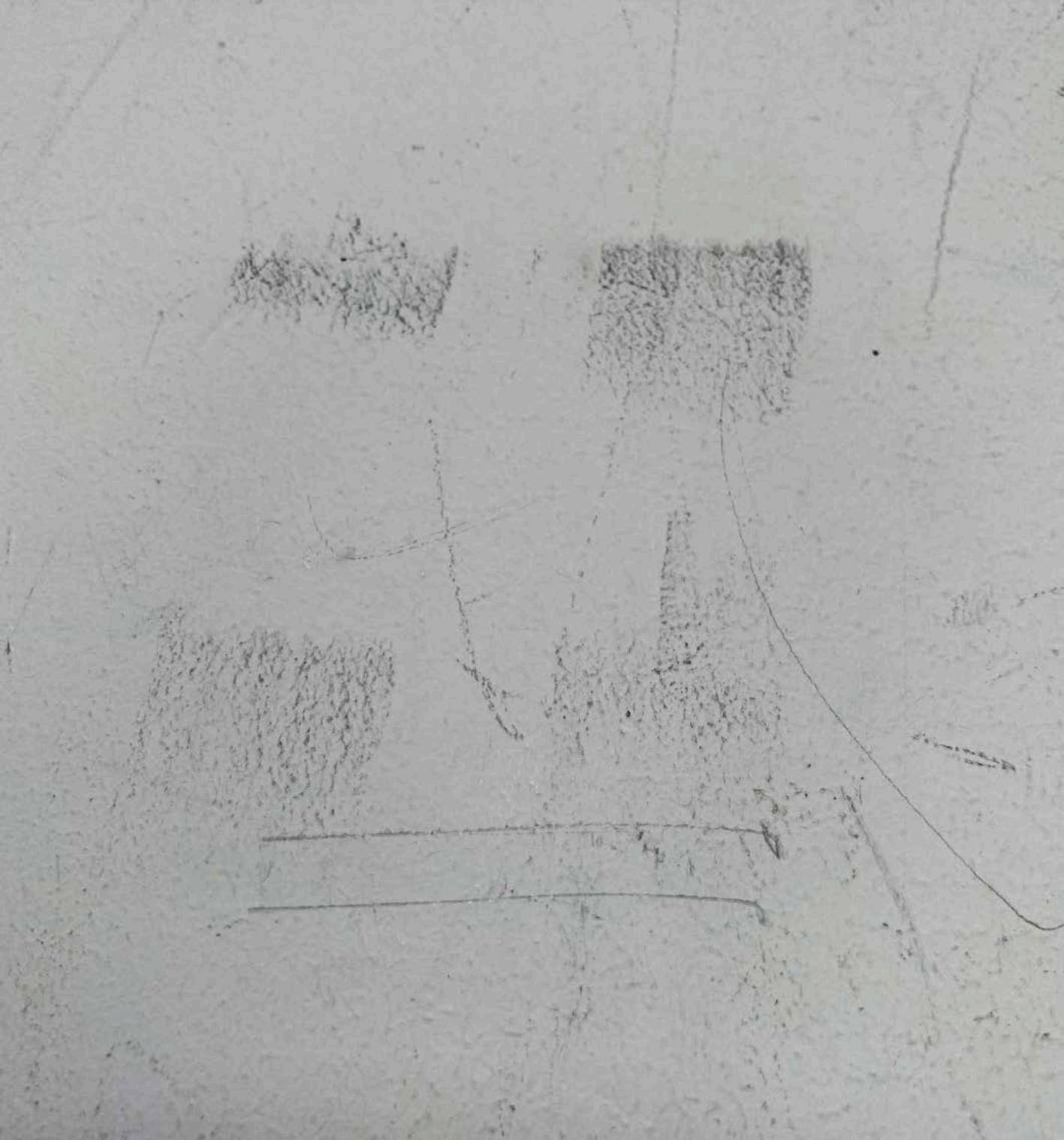












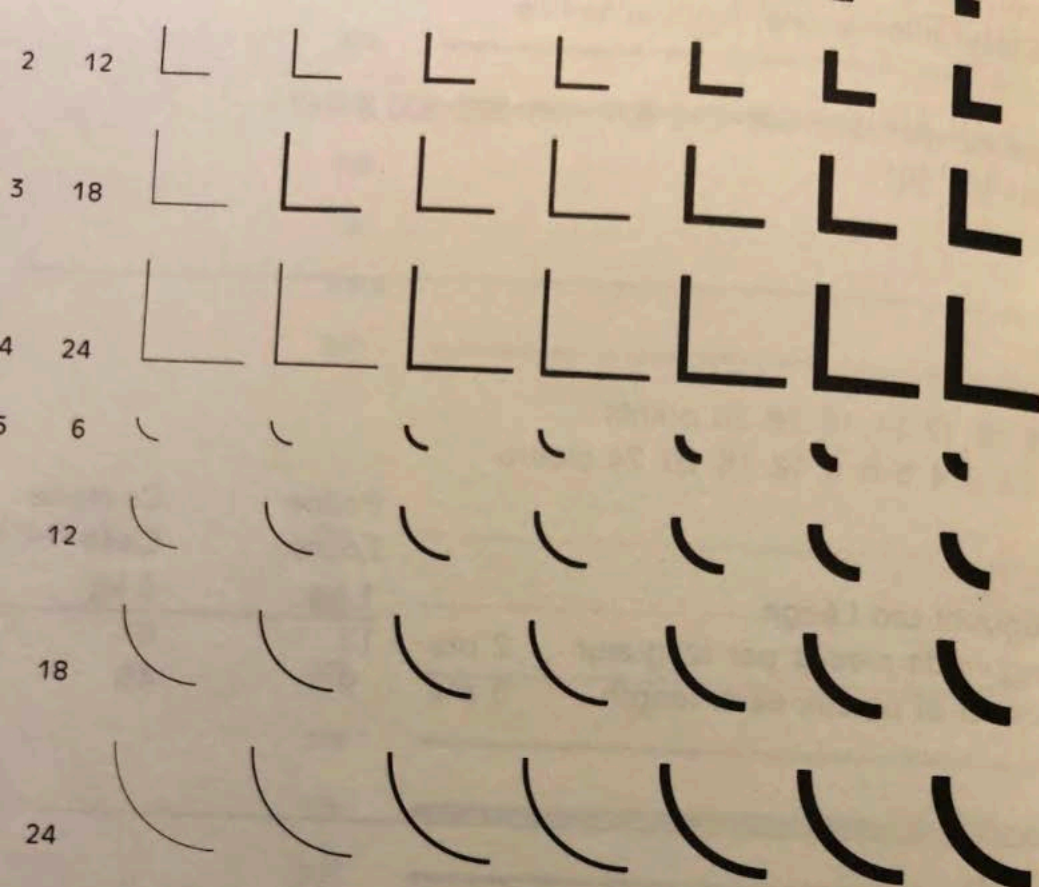




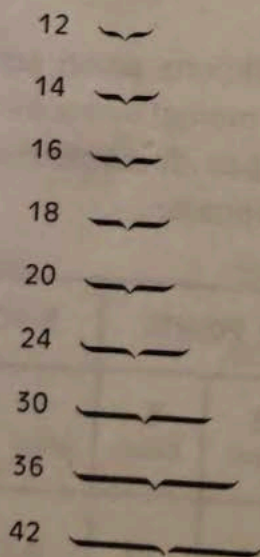


Harmony between Old and New  
Søndagens nye Opgaver  
Industria molinera  
Transformation  
New Orleans  
Dreiaakter  
Relique  
Dirva n

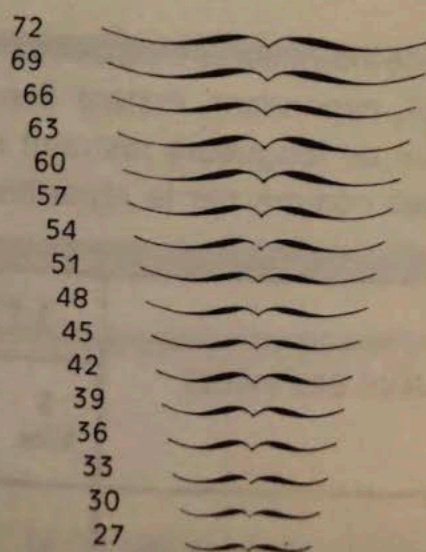




3 points



3 points DP



جسم ١٢ أسود  
إن محارف طريقة العربية المعيارية المشكولة (العَمَم-شَع) قد صممت على أساس الأنماط الدولية لرسم حروف الطباعة. وهي بذلك تمكن من استعمال جميع الآلات الطباعة.

جسم ١٤ أسود  
إن محارف طريقة العربية المعيارية المشكولة (العَمَم-شَع) قد صممت على أساس الأنماط الدولية لرسم حروف الطباعة. وهي بذلك تمكن من استعمال جميع الآلات الطباعة.

جسم ١٦ أسود  
إن محارف طريقة العربية المعيارية المشكولة (العَمَم-شَع) قد صممت على أساس الأنماط الدولية لرسم حروف الطباعة. وهي بذلك تمكن من استعمال جميع الآلات الطباعة.

جسم ٢٠ أسود  
إن محارف طريقة العربية المعيارية المشكولة (العَمَم-شَع) قد صممت على أساس الأنماط الدولية لرسم حروف الطباعة. وهي بذلك تمكن من استعمال جميع الآلات الطباعة.

جسم ٢٤ أسود  
إن محارف طريقة العربية المعيارية المشكولة (العَمَم-شَع) قد صممت على أساس الأنماط الدولية لرسم حروف الطباعة. وهي بذلك تمكن من استعمال جميع الآلات الطباعة.

جسم ٣٠ أسود  
إن محارف طريقة العربية المعيارية المشكولة (العَمَم-شَع) قد صممت على أساس الأنماط الدولية لرسم حروف الطباعة. وهي بذلك تمكن من استعمال جميع الآلات الطباعة.

جسم ٣٦ أسود  
إن محارف طريقة العربية المعيارية المشكولة (العَمَم-شَع) قد صممت على أساس الأنماط الدولية لرسم حروف الطباعة. وهي بذلك تمكن من استعمال جميع الآلات الطباعة.



20

RIGUEUR DU PLOMB  
DU L'OR DU NOMBRE

24

RIGUEUR DU  
PLOMB DU L'OR

30

RIGUEUR DU  
PLOMB DU

36

RIGUEUR  
DU PLOMB





























